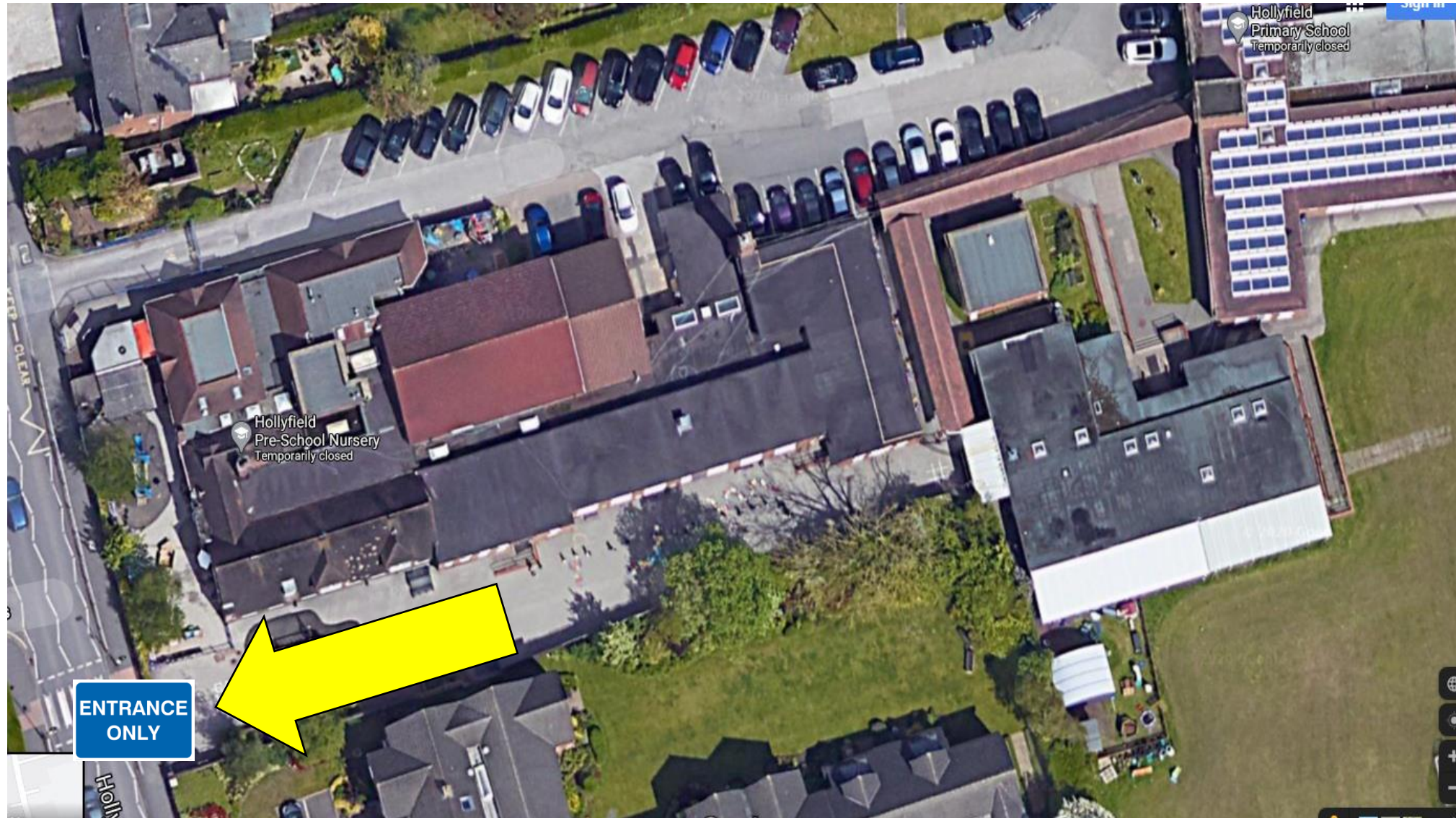


# All you need to know if your child is returning to school.





# There will be one way in







Comments received at your premises or from our clients of our training courses

**Willhan Training**

*"Thoroughly enjoyed our first Aid at Work training course. It was very informative, taught in a very relaxed atmosphere."*

*"I loved my 2-day Paediatric First Aid course."*

*"I would definitely recommend Willhan Training"*

**Delivering quality Qualifications & Training**  
Paediatric First Aid | Workplace First Aid | Health & Safety  
Food Safety and many more courses available  
Email: info@willhanttraining.co.uk TEL: 07746504835



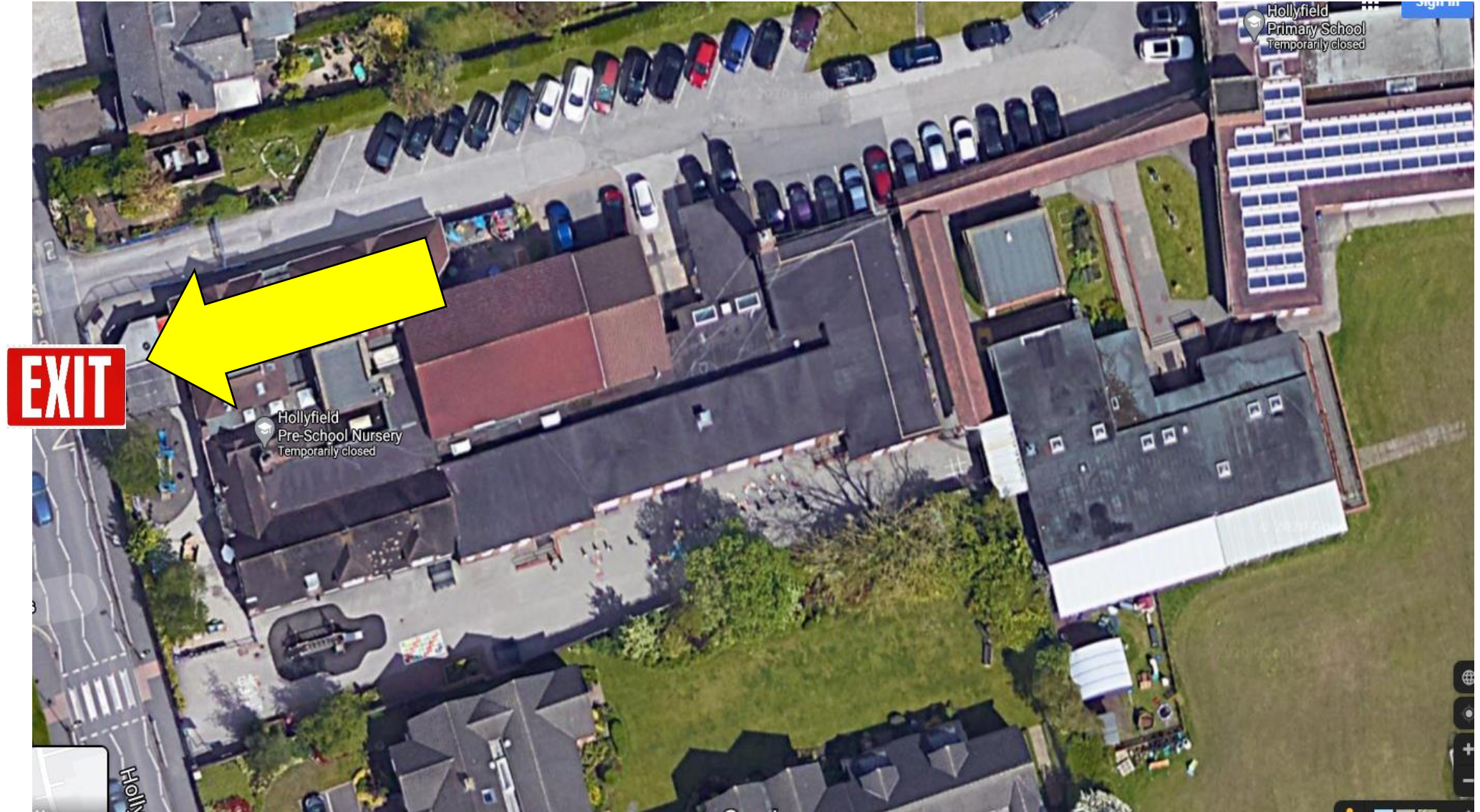




and...



# ...and one way out

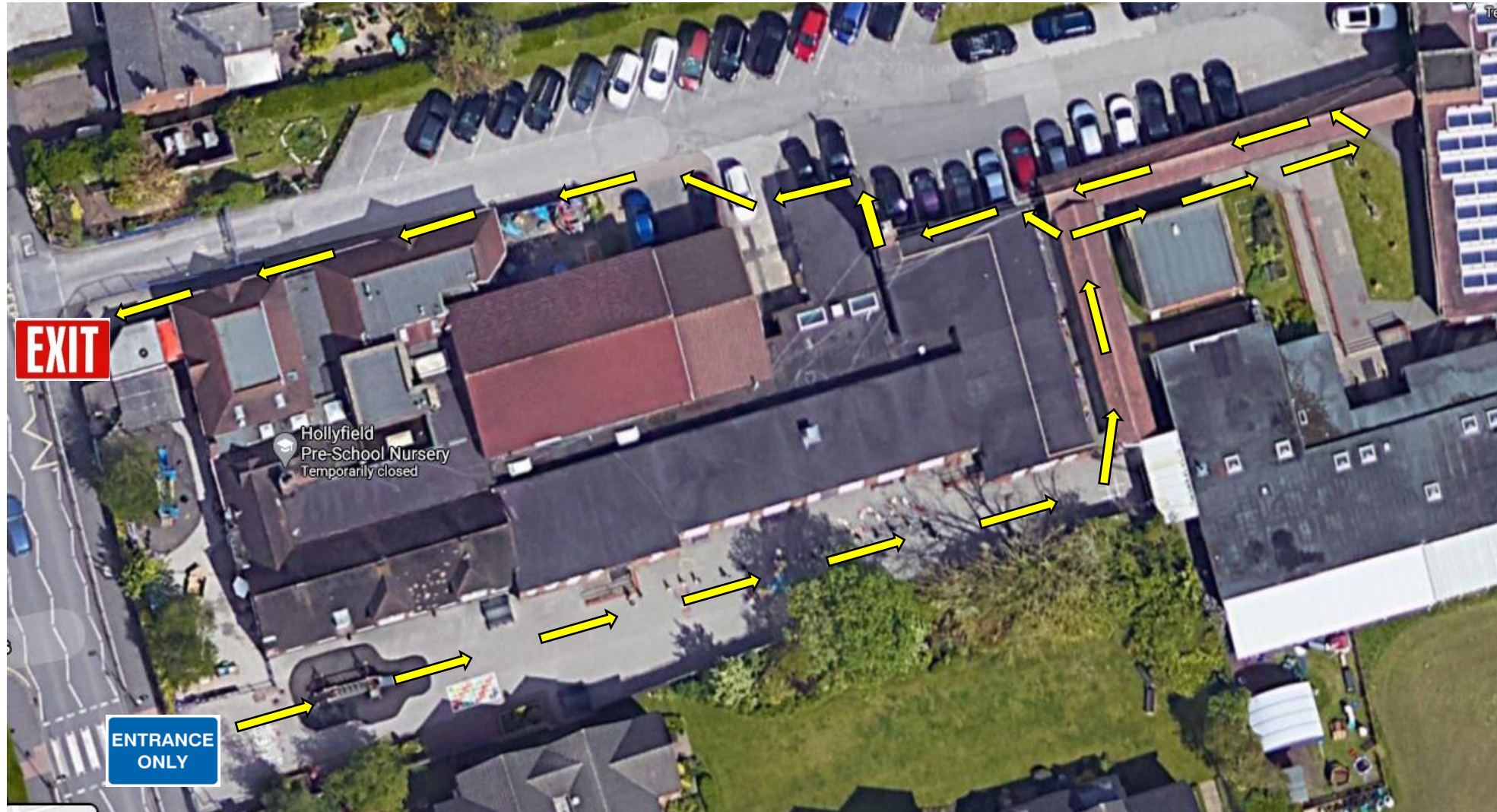








# A one way system is in place



## ...just follow the signs







**Please queue 2m apart when dropping your child off and while waiting to collect them.**





# Reception

**Start from:** Monday 8<sup>th</sup> June

**Times:** 8:45am – 2:45pm (11:45am finish on Fridays)

**Entry points:**

- Mrs Rand's group will enter/leave through the side door to Butterflies classroom of the KS1 playground. Please queue 2m apart alongside the sheds and blue fence.
- Miss Conway's group will enter/leave via Ladybird's door. Please queue 2m apart down the ramp outside.



Hollyfield  
Primary School  
Temporarily closed

Sign in

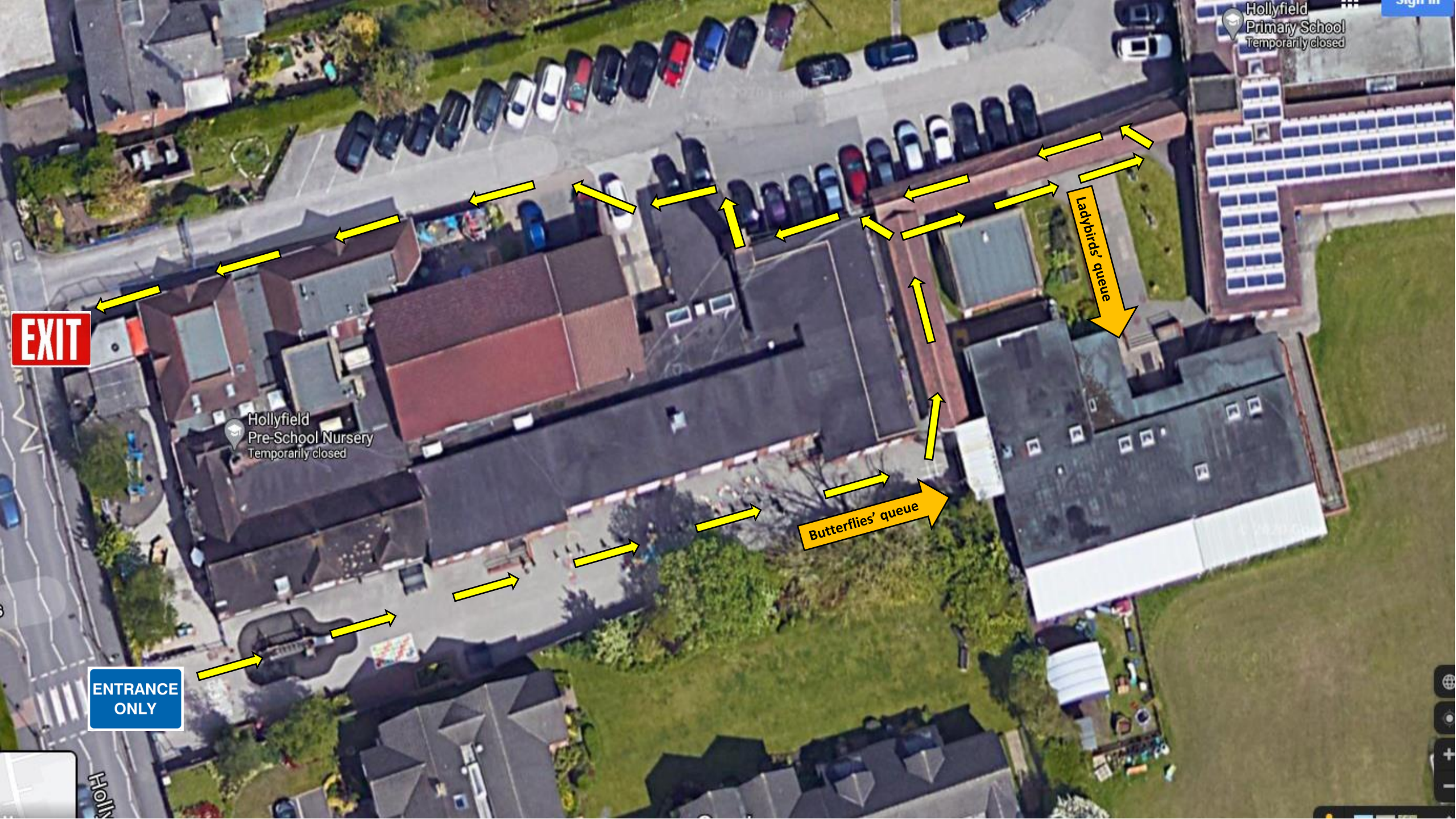
Hollyfield  
Pre-School Nursery  
Temporarily closed

EXIT

ENTRANCE  
ONLY

Ladybirds' queue

Butterflies' queue













# Year 1

**Start from:** Wednesday 10<sup>th</sup> June

**Times:** 9:00am – 3:00pm (12:00 midday finish on Fridays)

## **Entry points:**

- Miss Mallett's group will enter/leave via their usual entrance (small blue nursery gate). Please queue 2m apart alongside the classroom wall
- Mrs Wilkinson and Mrs Nicholls' group will enter/leave through the classroom door. Please queue 2m apart along the blue fence opposite.
- Miss Gibbons' group enter/leave through the Year 3 door. Please queue 2m apart alongside the building.



Hollyfield  
Primary School  
Temporarily closed

Sign in

Hollyfield  
Pre-School Nursery  
Temporarily closed

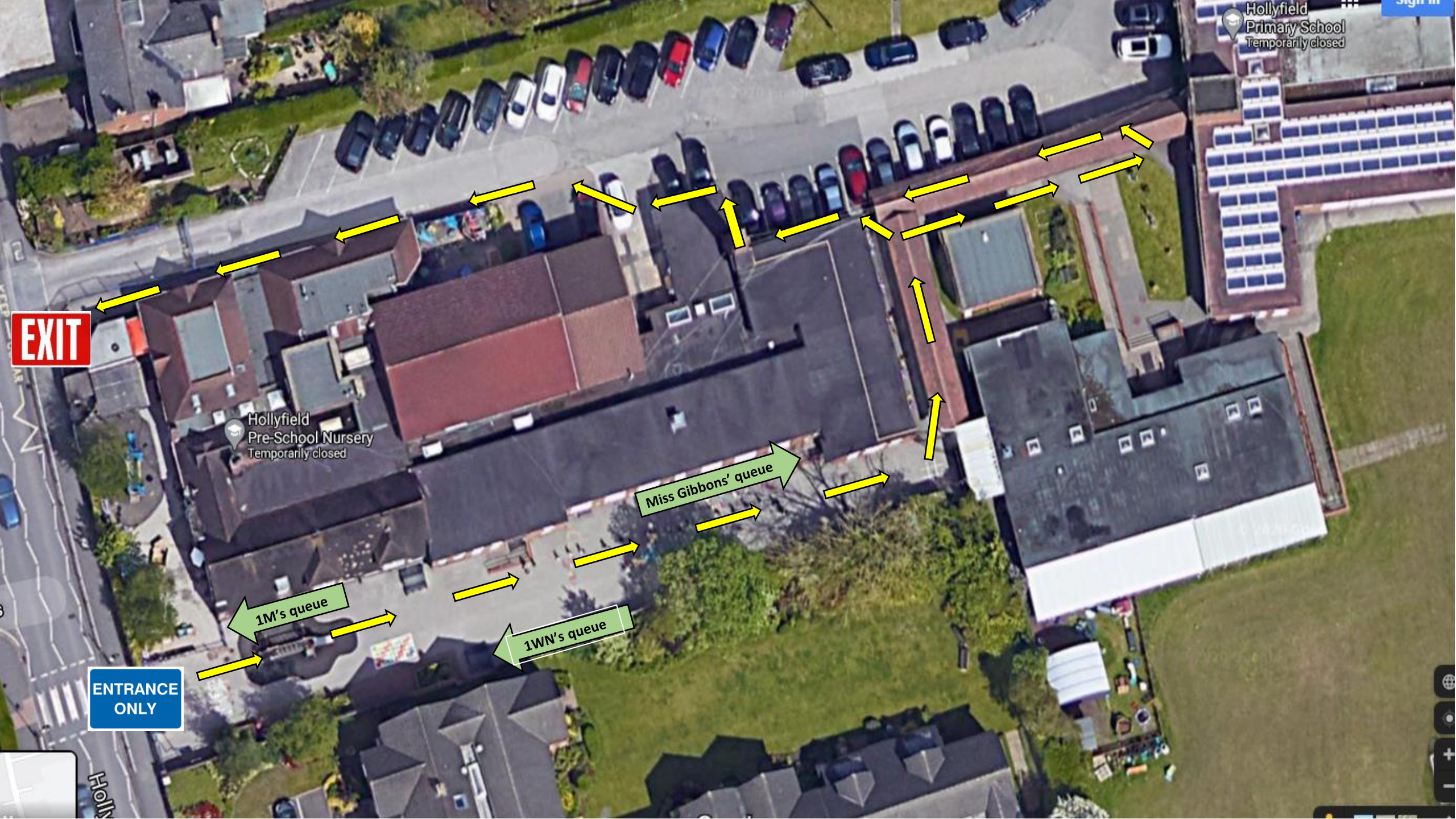
EXIT

ENTRANCE  
ONLY

1M's queue

1WN's queue

Miss Gibbons' queue













# Year 6

**Start from:** Monday 15<sup>th</sup> June

**Times:** 9:15am – 3:15pm (12:15 finish on Fridays)

**Entry points:**

- Mr Cole/ Mr Welch and Mrs Little's groups enter/leave through the KS2 hall fire door. Please queue 2m apart in front of double white doors.
- Mrs Briggs /Miss Cornwell's groups will enter/leave through their usual entrance on the KS2 playground. Please queue 2m apart in front of the ramp.



Hollyfield  
Primary School  
Temporarily closed

Sign in

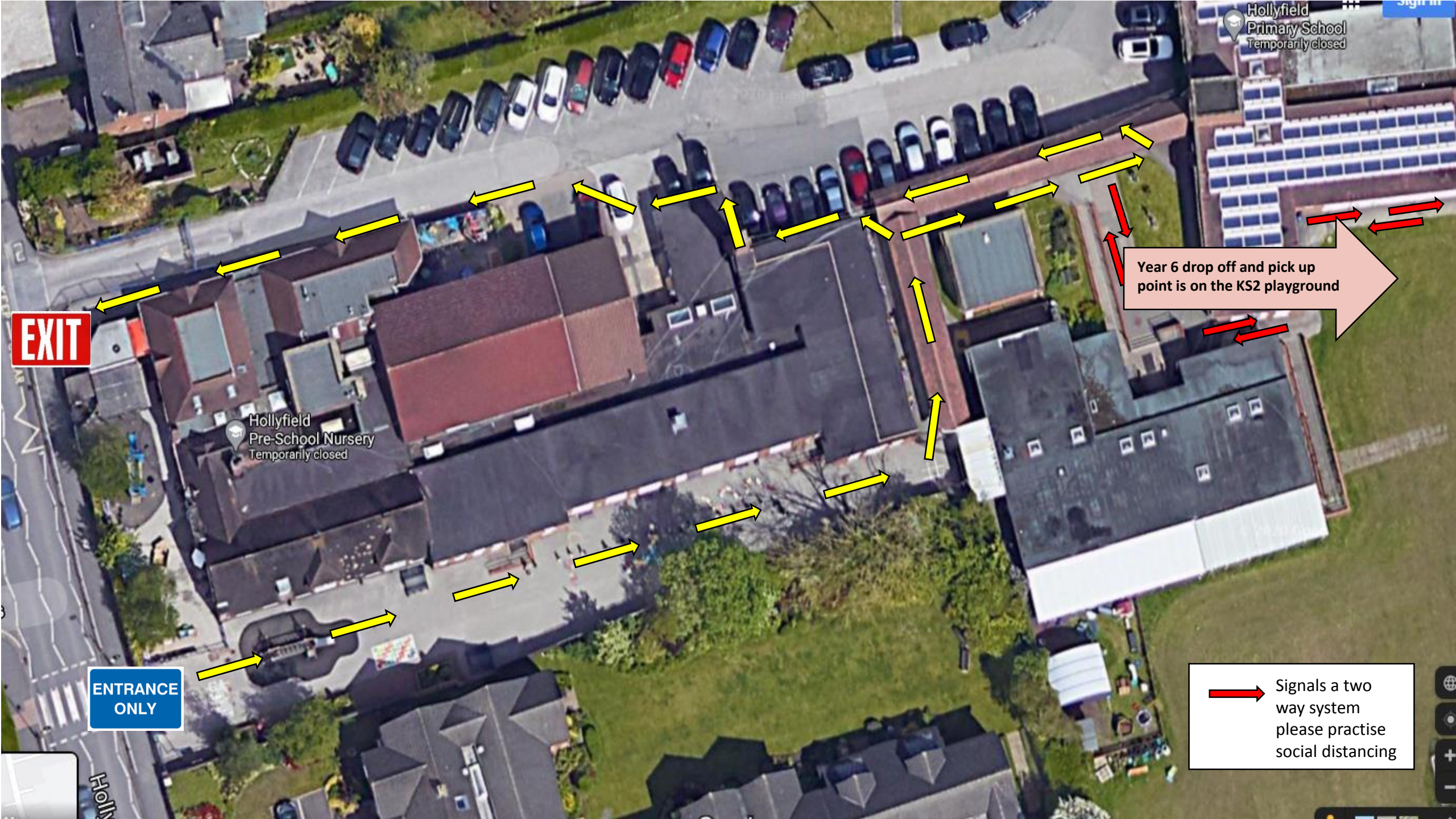
Hollyfield  
Pre-School Nursery  
Temporarily closed

Year 6 drop off and pick up  
point is on the KS2 playground

→ Signals a two  
way system  
please practise  
social distancing

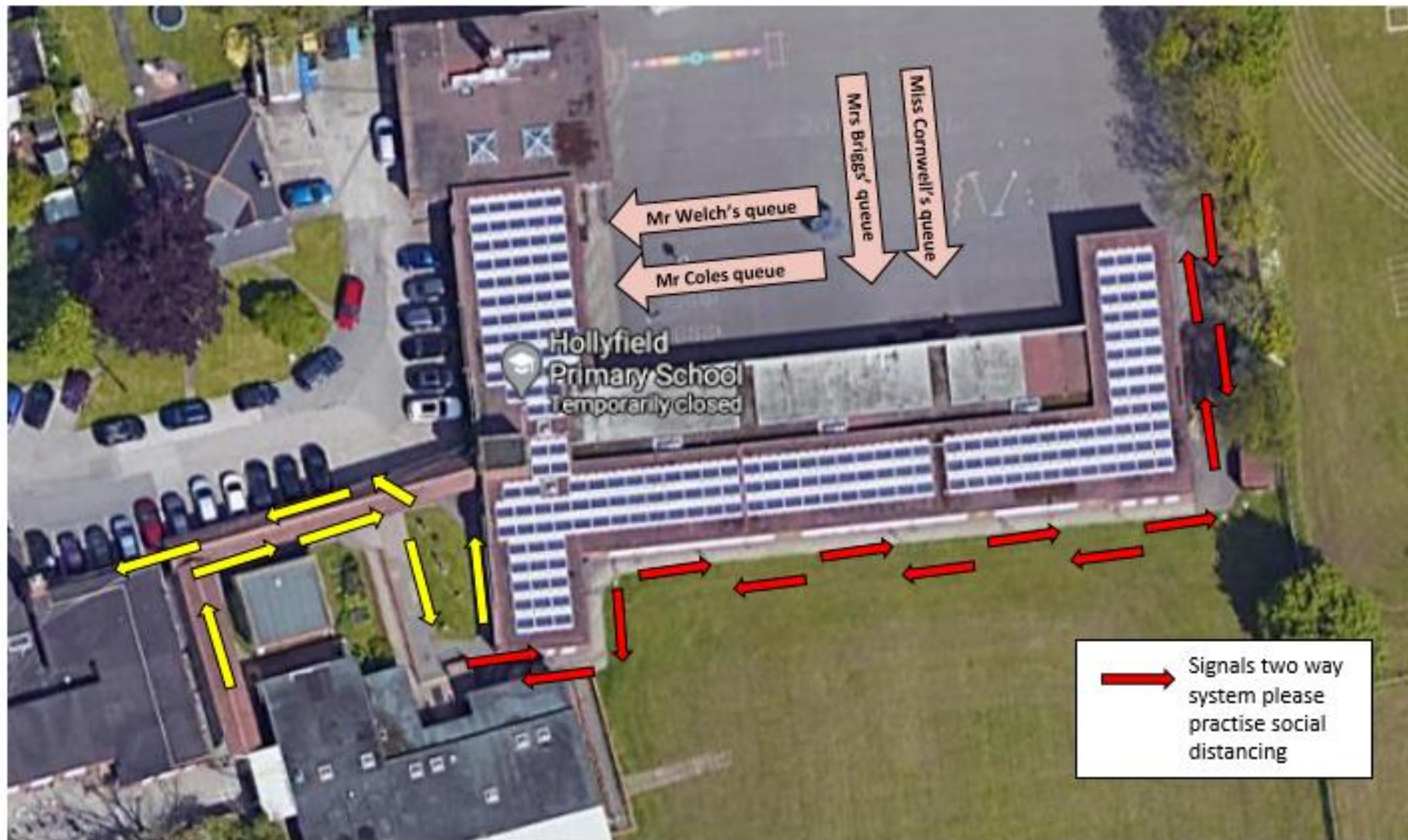
EXIT

ENTRANCE  
ONLY





# Key Stage 2 Playground













# Years 2, 3, 4 and 5 Key Worker and Vulnerable Children

**Starting from:** Monday 8<sup>th</sup> June

**Times:** 8:45am – 3:15pm

**Entry point:**

- Years 2 and 3 will enter/leave through the double blue doors to the left of the KS1 hall just off the drive. Please queue 2m apart in front of the doors.
- Years 4 and 5 will enter/leave via their usual entrance on the KS2 playground. Please queue 2m apart in front of the ramp.



Hollyfield  
Primary School  
Temporarily closed

Sign in

Hollyfield  
Pre-School Nursery  
Temporarily closed

Y2/3 Keyworkers

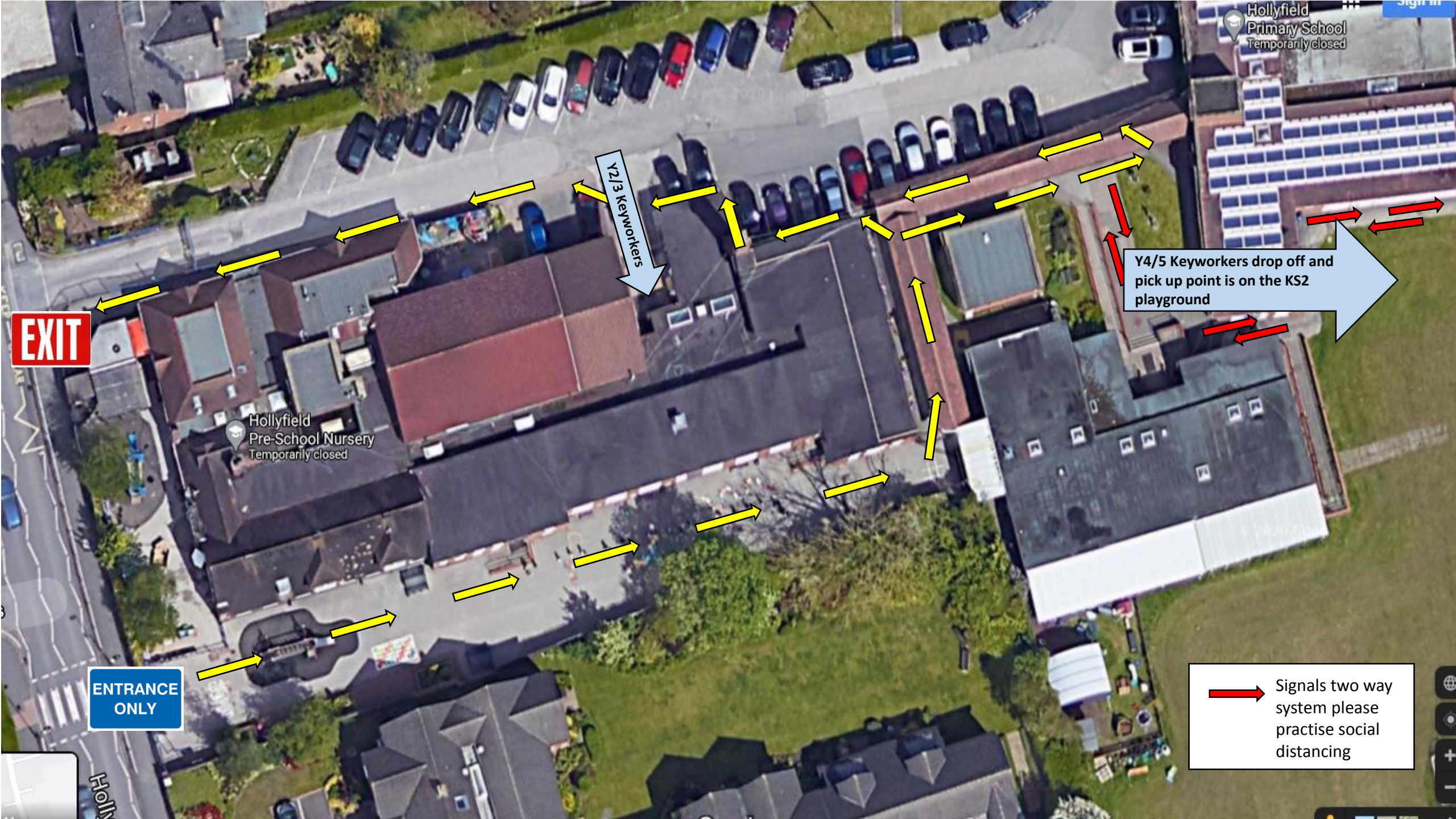
Y4/5 Keyworkers drop off and  
pick up point is on the KS2  
playground



Signals two way  
system please  
practise social  
distancing

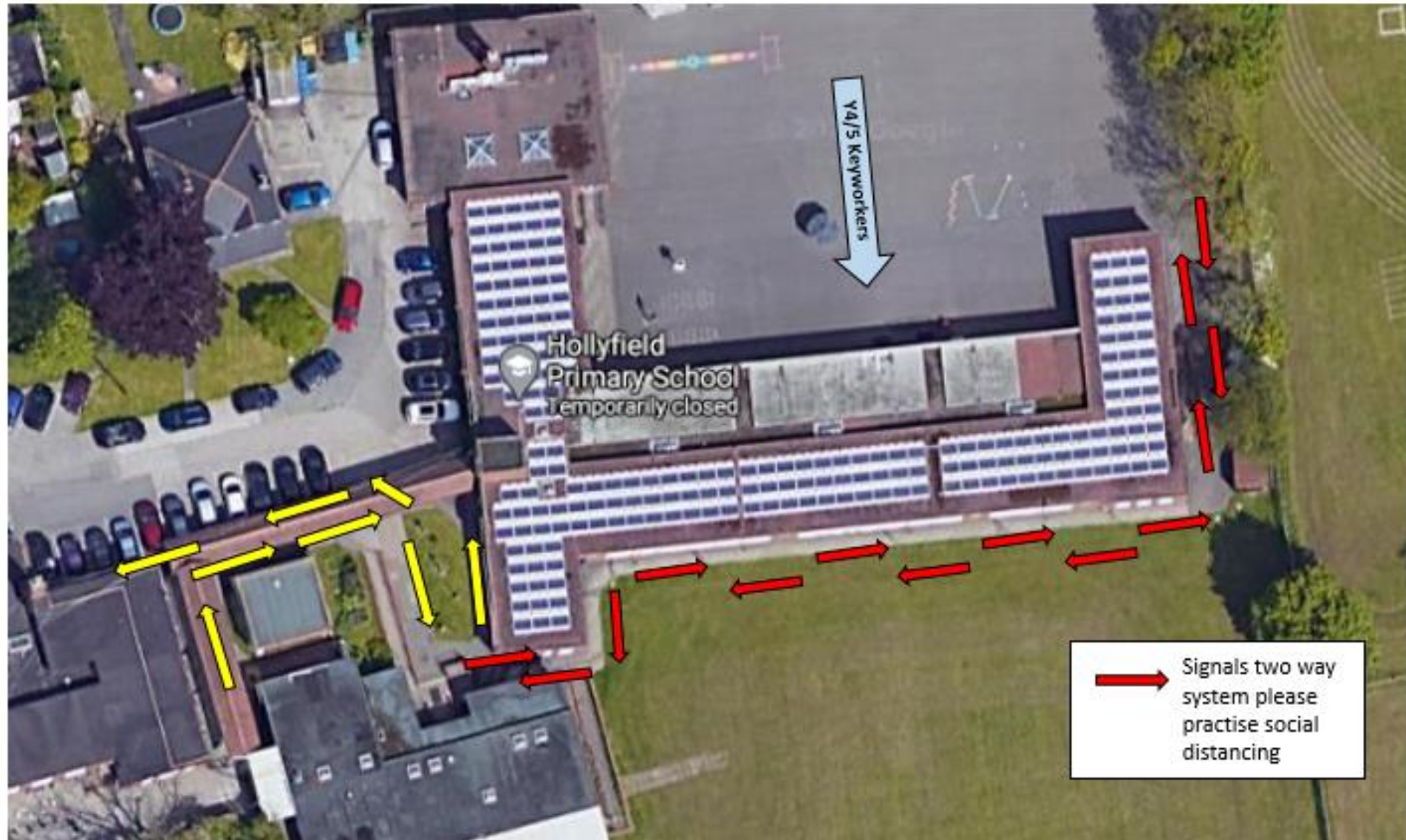
EXIT

ENTRANCE  
ONLY





# Key Stage 2 Playground













Hollyfield  
Primary School  
Temporarily closed

Sign in

Hollyfield  
Pre-School Nursery  
Temporarily closed

EXIT

ENTRANCE  
ONLY

Y2/3 keyworkers' queue

Y6/Y5 keyworkers' queue

Y6 and Y4/5 Keyworkers drop  
off and pick up point on KS2  
playground

Miss Gibbons' queue

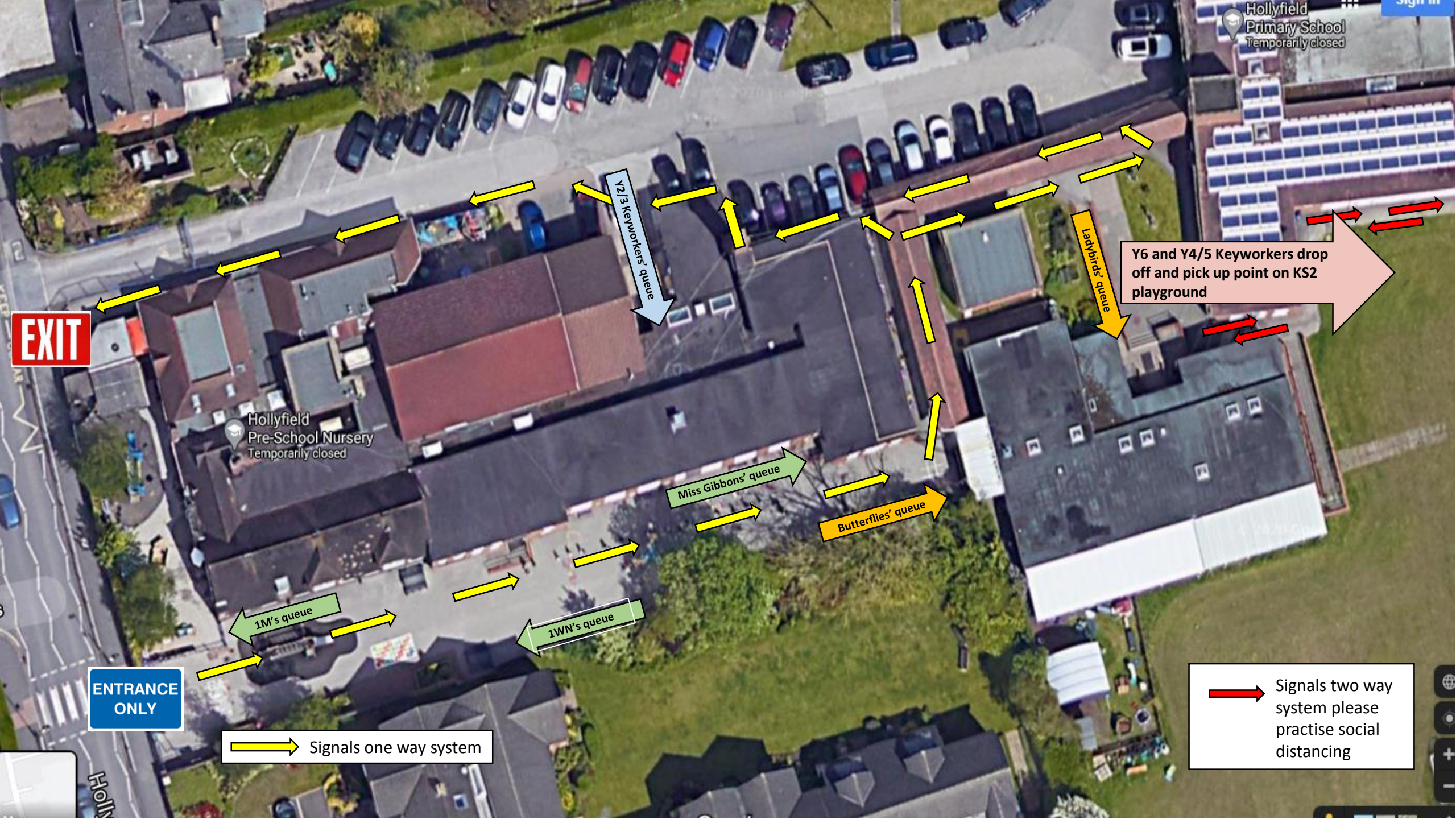
Butterflies' queue

1M's queue

1WN's queue

Signals one way system

Signals two way  
system please  
practise social  
distancing





# Please:

- Only **one** adult per family on site
- Arrive promptly
- Leave as soon as you have dropped off/collected your child
- No loitering
- Practise social distancing at all times



**Finally...**



**THANK YOU FOR YOUR CO-OPERATION AND  
SUPPORT**