

# Year 3 Summer Term



## English

First, we will explore the fascinating life of Mary Anning, building on our previous work on the Stone Age.

Next up, we'll delve into the delightful poem "The Owl and The Pussy Cat." We'll examine its features, expand our vocabulary and even have a go at performing it!

Finally, we'll embark on an exciting narrative writing journey with the tale of St George and the Dragon.



**Year 3 are reading...**



We will continue to read regularly in Reading Practice sessions. We will be reading a wide variety of texts and developing fluency, pace and prosody. We will also continue to develop our reading comprehension skills.

Our author focus this term is Kieran Larwood.

## Maths

Our maths units this term will focus on developing fluency, reasoning and problem solving. We will also work on fractions, comparing, ordering and understanding their equivalent value.

We will also learn to add, subtract and convert money and to tell the time and solve problems involving time.

## Art

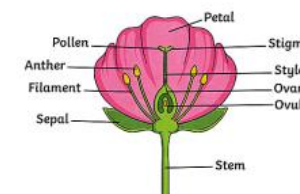
This term we will be focussing on drawing. We will:

- Know the difference between organic and geometric shapes.
- Use simple shapes to form the basis of a detailed drawing.
- Use shading to demonstrate a sense of light and dark in their work.
- Shade with a reasonable degree of accuracy and skill.
- Blend tones smoothly and follow the four shading rules.

## Science

In science we will study plants and know what they need to grow healthily. We will learn to describe the function of different parts of plants. As part of this unit, we will also understand a plant's impact on the Earth's climate.

Parts of a Plant



## Homework

- Homework will be set every Friday.
- Children's books (eBooks and reading for pleasure books) will be regularly changed. Their reading folders will be sent home every Friday.
- Please listen to your child read at least 3 x per week.

## Geography

Our geography topic this term is 'Are all Settlements the Same?'

We will:

- Locate some cities in the UK.
- Identify features on an OS map using the legend.
- Locate some geographical regions in the UK.
- Identify and begin to offer explanations about changes to features in the local area.
- Describe the location of New Delhi.
- Identify some human and physical features in New Delhi.

## DT

This term in DT we will be constructing a castle.

We will:

- Draw and label a simple castle that includes the most common features.
- Recognise that a castle is made up of multiple 3D shapes.
- Design a castle with key features which satisfy a given purpose.
- Use glue to securely assemble geometric shapes.
- Utilise skills to build a complex structure from simple geometric shapes.

## Music

This term we will be completing a unit on 'Jazz' music.

We will:

- Play on the 'off beat' and sing a syncopated rhythm.
- Improvise or compose a scat, with sounds and words.
- Compose and play a jazz motif fluently, using swing quavers.
- Play a swing rhythm using a tuned percussion instrument.



## PSHE & RE

Our PSHE focusses this term are 'Being my Best' and 'Growing and Changing'. We will focus on teamwork and understand how we change as we grow older.

Our RE focus will be learning about different religious traditions. We will also look at being honest and truthful using stories from different faiths.

## Computing

This term in computing we will focus on simulations where we will:

- consider what simulations are.
- explore a simulation.
- analyse and evaluate a simulation.



2Simulate

## PE

This term in PE, our focus will be on tennis and athletics.

In tennis, we will learn how to bounce the ball using the racket as well as how to serve the ball to our partner.

In athletics, we will prepare ourselves for the end of year Sports Day by practising our throwing skills and competing in numerous track events.

Please continue to ensure your child comes into school wearing their PE kit on PE days.